

# Extendable rotating cleaning nozzle

## PopUp Whirly

### Series 5P2/5P3



#### Features:

- Pressure-dependent automatically extending rotating cleaning nozzle
- Can be installed flush in the tank wall
- Suitable for cleaning pipes and applications that use foam
- Particularly suitable for applications in the pharmaceutical, chemical and food and beverage industry



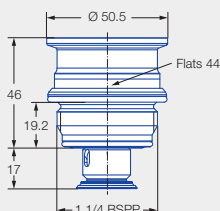
**ATEX version  
on request**



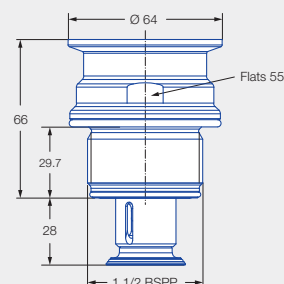
**Series 5P2**



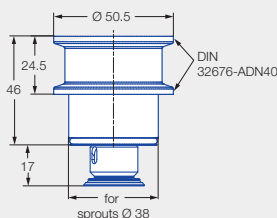
**Series 5P3**



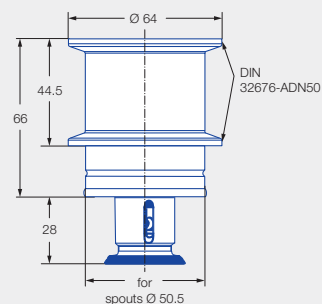
**Male thread**



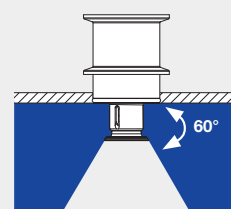
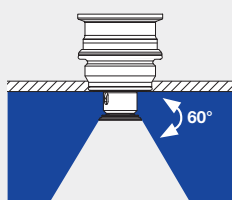
**Male thread**



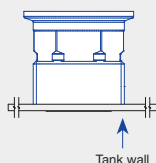
**Tri-Clamp connection<sup>1</sup>**



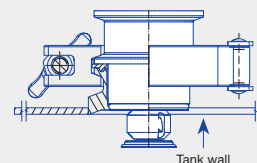
**Tri-Clamp connection<sup>2</sup>**



#### Installation situation



**Via thread in idle position**



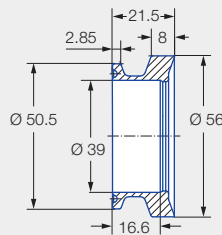
**Via Tri-Clamp in operating position**

<sup>1</sup> A clamp according to DIN 32676-A with a connection diameter of 50.5 mm is required to connect the nozzle to the weld-in flange.

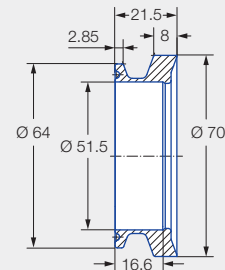
<sup>2</sup> A clamp according to DIN 32676-A with a connection diameter of 64.0 mm is required to connect the nozzle to the weld-in flange.

## Weld-in flange for Tri-Clamp connection

A 2 mm thick gasket must be used if the PopUp Whirly is installed with the weld-in flange.



**Ordering no.:** 050.020.1Y.01.00  
**Material:** Stainless steel 316L



**Ordering no.:** 050.020.1Y.01.01  
**Material:** Stainless steel 316L



**Max. temperature**  
140 °C



**Installation**  
Operation in every  
direction is possible



**Bearing**  
Slide bearing



**Material**  
Stainless steel 316L,  
stainless steel 316Ti,  
stainless steel 316,  
FKM




**Recommended  
operating pressure**  
2 bar  
5P2: Opening pressure  
approx. 1.0 bar, closing  
pressure approx. 0.5 bar,  
5P3: Opening pressure  
approx. 0.9 bar, closing  
pressure approx. 0.5 bar



**Filtration**  
Line strainer with a mesh  
size of 0.3 mm/50 mesh



Spray angle	Ordering no.				Narrowest free cross section Ø [mm]	V̇ water [l/min]			
	Type	Code				p [bar] (p <sub>max</sub> = 5 bar)			
		1 1/4 BSPP	1 1/2 BSPP	Tri-Clamp		1.0	2.0	3.0	at 40 psi [US gal/min]
	5P2.873.1Y.AP	●			2.5	11	15	18	5
	5P2.873.1Y.00			●	2.5	11	15	18	5
	5P2.923.1Y.AP	●			3.5	14	20	25	6
	5P2.923.1Y.00			●	3.5	14	20	25	6
	5P3.043.1Y.AR		●		3.3	28	40	49	12
	5P3.043.1Y.00			●	3.3	28	40	49	12

Detailed information can be found in our brochure "Tank and Equipment Cleaning" as well as at [www.lechler.com/de-en/tankcleaningnozzles](http://www.lechler.com/de-en/tankcleaningnozzles).

The maximum tank diameter applies to the recommended operating pressure and is meant as a recommendation only.  
The cleaning result is also affected by the type of soiling.

### Information on operation

- The PopUp Whirly is not suitable for operation with compressed air or any other gas.
- Operation above the recommended operating pressure has a negative impact on the cleaning result and wear.